

# Owner's Manual

## Graveyard Smash



The Operator of this equipment is responsible for maintaining customer safety at all time.



708-598-3720

## SAFETY WARNING

In order to use this game safely, be sure to read this Operator's Manual thoroughly before installation, adjustment or use of this game.

Whenever the owner of this game or his authorized representative disassembles, install, adjusts, repairs or performs periodic maintenance on this game, the owner should ensure that the person performing the work has read the appropriate precautions and the relevant section of this manual prior starting work.

In order to prevent accidents while this game is in operation, make sure that the safety notes described below are followed.

This game is intended for indoor use only and should be for the purpose intended.

## SAFETY NOTES

These safety notes are to be used throughout this manual. Only qualified personnel should work on this equipment

**WARNING:** -this denotes a hazard that could result in injury, death, or damage to the game.

**CAUTION:** -this denotes a hazard that could result in damage to the game. Do not proceed beyond a warning note until the indicated conditions are fully understood and conformed to.

## GENERAL SAFETY CONDITIONS

### WARNING

--- Only operate this game after checking that the unit has been installed properly and in accordance with this manual.

---All warning notices must always be visible and in good condition. Warning labels, which are worn, or illegible, should be replaced immediately.

--- Only qualified personnel should be perform the installation, adjustment, repair and/or periodic maintenance of this game.

---To prevent the possibility of electrical shock, the game MUST be plugged into AC power receptacle using an appropriate three prong GROUNDED plug.

If at any time the AC power cord is damaged, it MUST be replaced immediately.

# CONTENTS

**Specifications&Requirement.....5**

**1.Specifications**

**2.Requirements**

- Package Contents
- Installation and Setting
- Location ,Fixed and Movement
- Connecting the power cord

**Operation Manual.....12**

- Test and set
  - 1.1 Level 1 Setting
  - 1.2 Level 2 Setting
  - 1.3 Level 3 Setting
  - 1.4 Level 4 Setting
- 2.Instruction for Difficulty Adjustment
- 3.Setting for Score per Credit
- 4.Setting for Score per Tickets
- 5.Clear the Coins
- 6.Clear the Tickets
- 7.Save and quit the setting

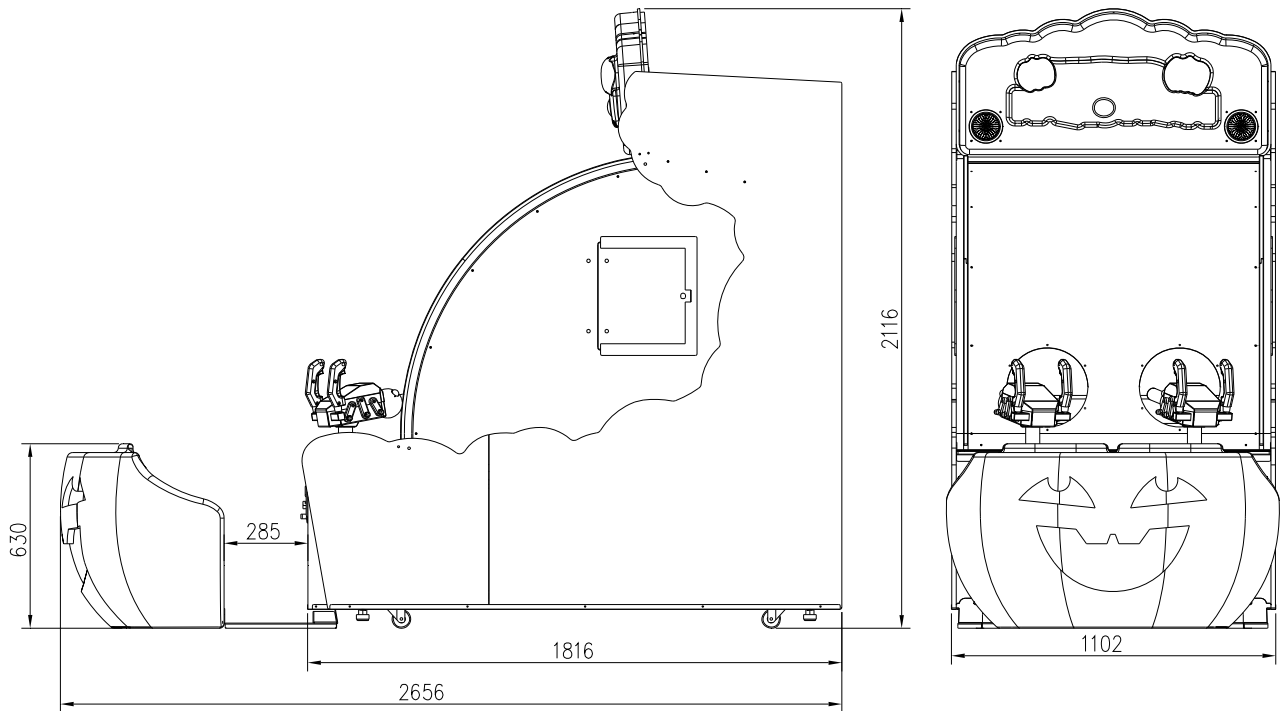
**Maintenance and Troubleshooting.....14**

- Common faults and Troubleshooting
- Troubleshooting and Inspect Steps
- Routine Maintenance

**Attachment&Picture.....19**

- Attachment 1
- Attachment 2
- Attachment 3

## Specifications&Requirement



- 1) Rated Power supply: AC220V/110V 50Hz (Note: please refer to the label on the game for the actual voltage.)
- 2) Dimensions: W1102xD2656xH2116 (mm)
- 3) Weight: about 250 Kg
- 4) Power: 250W-350W
- 5) Temperature(Indoor): -10 ~+40 ,Humidity ≤90%;

**※Note: Game parameters are subject to change without notice.**

## Package Contents

When open the box of packaging, make sure that the following parts are supplied.

**Body Assembly; 1 unit**

**Accessories:**

No.	Content	Specification	Qty'	Photo	Note
1	Graveyard Smash		1		
2	Micro-Switch with long wire		2		
3	Fuse	6x30mm 5A\250V	1		
4	Power Cord	DZ-301.10A\2 50V	2		1.5M
5	Micro-Switch	KW-5	4		
6	Key	3172	2		
7	Key	3157	2		
8	User Manual (English)		1		
9	Ball	Φ35 White, Yellow	10	Each color :5pcs	
10	Input IC (SN74HC245)		2		
11	Inner Hexagon Spanner	CR-3,CR-4	2		Each size for 1 pcs
12	Recover USB	OCEAN -LOGO	1		8G Graveyard Smash

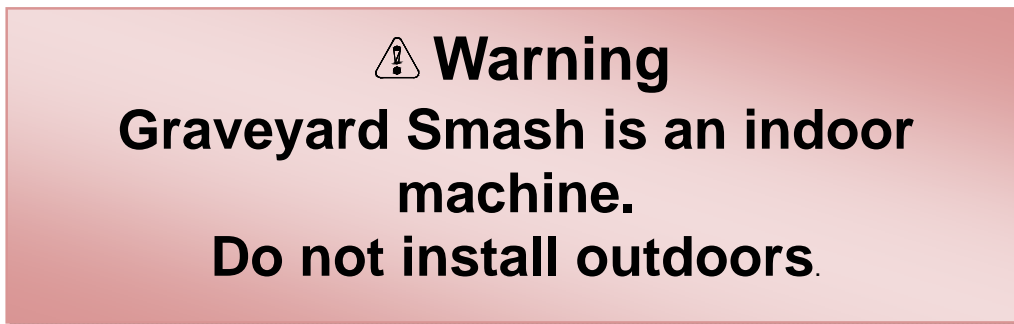
Note: Parts in the list above may change without notice.

## Installation and Setting

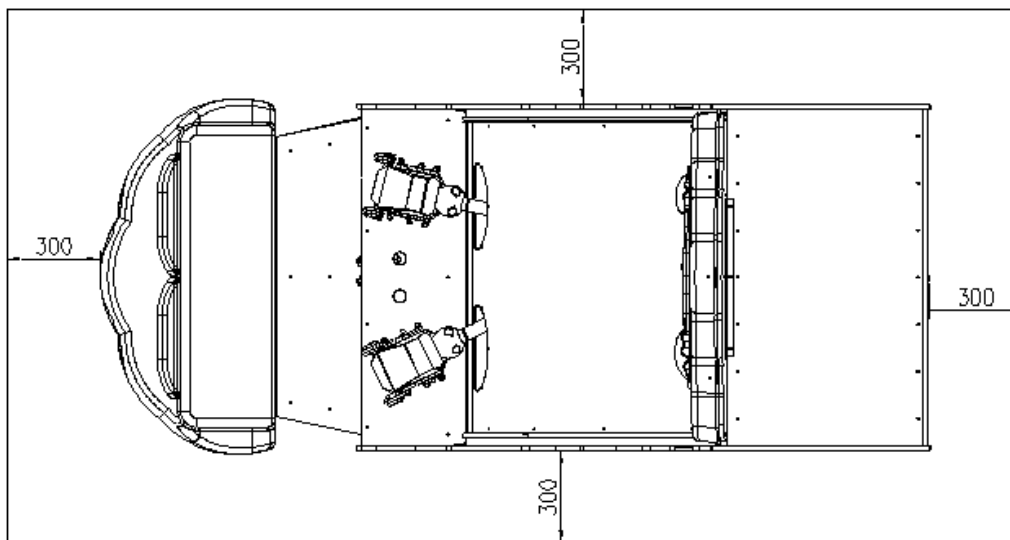
- Please use original parts in the machine.
- Remove all packaging and from around the game
- Plug in seat connector located under aluminum foot plate to the underside of the game cabinet.
- Secure seat to game with screws provided.
- There are 100 balls installed in the game
- Install this machine on a flat surface. Adjust levers to lift casters off the ground to level the game. If the game is installed on an unsuitable floor, it could cause a malfunction.
- After installation is completed, apply power and check game for normal operation..

## Location and Transportation

### Location



- This machine requires space for playing the game (play zone) and for maintenance (maintenance zone) as shown below. Be sure to leave enough space when installing the machine.
- The play zone is about: 300mm
- The maintenance zone is about: 300mm



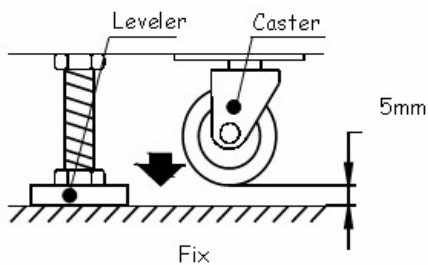
- Failure to follow location requirements may result in fire, electric shock, injury and or malfunctioning.
- Places subject to rain or water leakage, or places subject to high humidity in the proximity of an indoor swimming pool and or shower, etc.
- Places subject to direct sunlight, or places subject to high temperatures in the proximity of heating units, etc.
- Places filled with flammable gas or vicinity of highly flammable/volatile chemicals or hazardous matter.
- Dusty places.
- Sloped surfaces.
- Places subject to any type of violent impact.
- Vicinity of fire exits and fire extinguishers.

The operating (ambient) temperature range is from -10 to +40 .

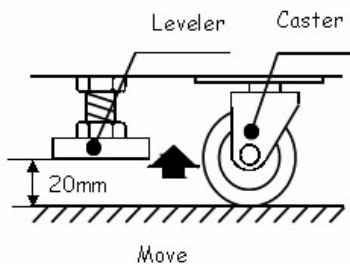
## Transportation

Install this machine on a flat surface. Adjust levers to lift casters off the ground to level the game. If the game is installed on an unsuitable floor, it could cause a malfunction.

To fix the game, adjust the Leveler down until it touches the floor, lifting the casters off the ground by 5 mm. Repeat the same for all levelers.



To move the game, adjust the leveler up to keep a distance 20mm from the floor. In order to avoid the damage while moving the game, when the caster touches the floor, move the game from its left or right side step by step.

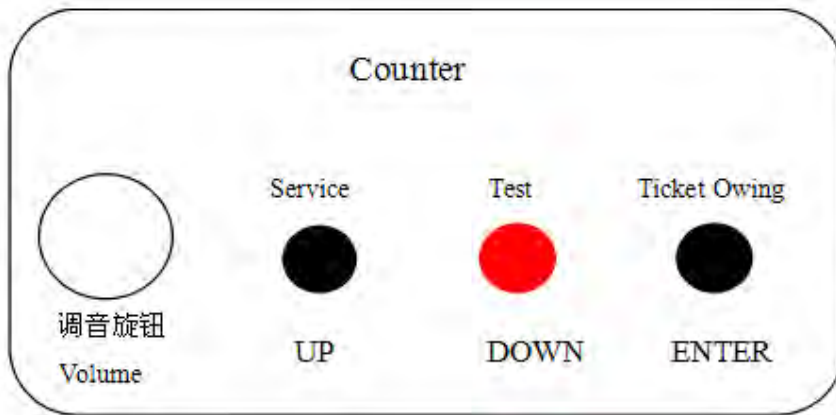




# Game Settings

## Test and Set

- (1) Press the "ENTER" button for 5 seconds to enter main menu.
- (2) Use UP / DOWN buttons to move the arrow to the desired field. Press ENTER to select then UP / DOWN to change the value.
- (3) After all values have been changed Select "Save and Exit" to store changes.



## Main Settings Menu

**Coin/Credit**            1        (set to "0" for FREE PLAY)

**Score per Ticket**    50       (set to "0" for NO TICKETS)

This is the main method to adjust the ticket payout percentage. All other adjustments provide a much finer control if necessary.

**Mercy Tickets**            (0-10)

**Difficulty Setting**    number of strikes before defeat

Small Monster Life    2        (3-30)

Big Monster Life       4        (10-100)

Stage 1 Boss Life     40       (10-100)

Stage 2 Boss Life     50       (10-100)

Stage 3 Boss Life     60       (10-150)

Stage 4 Boss Life     70       (10-200)

Player attack force    1        hit points for each ball against monsters. Example : small monster is set to 2 attack force is set to 1 . It will take 2 balls to kill the small monster.

Player Life            10 (number of times player can be attacked before death)

Easy time              25s    (5-120) (length of time player gets higher attack force.

Easy attack force      20      (0-100) (value of attack force during easy time)

Play time              (20-300)

**Volume Setting**

Game Volume          0-100

Attract Volume        0-100

**Clear Credits Owed**

**Clear Tickets Owed**

**Audit Information**

\* Audit values are from last accumulated since the last time the data was cleared. Clear Time Record

shows last data clear.

Cost Per Credit .25 (0-10)

Total Credits xxx number of coins played over period

Cost Per Ticket .01 (0-.2)

Payout Settings 30% (1-100)

Shortest Play Time shortest game played \*

Longest Play Time longest game played \*

Average Play Time average game time \*

Total Tickets total tickets won \*

Tickets per Credit calculated average tickets per credit \*

Payout Percentage calculated payout percentage \*

Clear Data

Clear Time Record last time data was cleared

**Save and Exit**

# Maintenance and Troubleshooting

## 1.Common faults and Troubleshooting

No.	PROBLEM	PROBABLE CAUSE	SOLUTION
1	Game will not power up.	No power Power Supply Fault of Power Switch Blown Fuse	Check AC and 220V/110V Supply Power is normal Check AC and 12V&24V&5V GND is short circuit Replace Supply Power Switch Replace fuse
2	No sound	Fault of speaker and the wire is loose Fault of Main Board	Replace speaker Replace Main Board
3	Coin mech will not accept coins	No coin mech signal line continuity Fault of Coin Selector	Check for loose connectors or broken coin mech signal wire. Replace coin selector
4	Tickets will not count	Fault of Ticket PCB Motor enable line fault Main board fault	Replace ticket dispenser Check ticket dispenser signal line
5	Ticket dispenser motor runs non stop	Ticket dispenser failure PCB failure. Main board failure	Replace ticket dispenser Check the wire route
6	Can't Shoot Balls out	Broken Balls Ball feed tube obstructed Gun trigger micro inop Rubber Wheel damaged Main board not working properly.	Remove broken balls Change trigger micro Replace input IC on the main board
7	Breaking Balls	Gun range is to great allowing balls to hit the wood frame around the screen	Install gun alignment spacers
8	Ball will not sense on screen	Dirty IR bezel IR bezel failure Computer failure	Clean IR Replace IR Replace Computer

## 2.Troubleshooting and Inspect Steps

(1) When brown coin information wire of coin selector is collide with ground wire that create coin information,the wire is normal,if not it needs to replace coin selector.

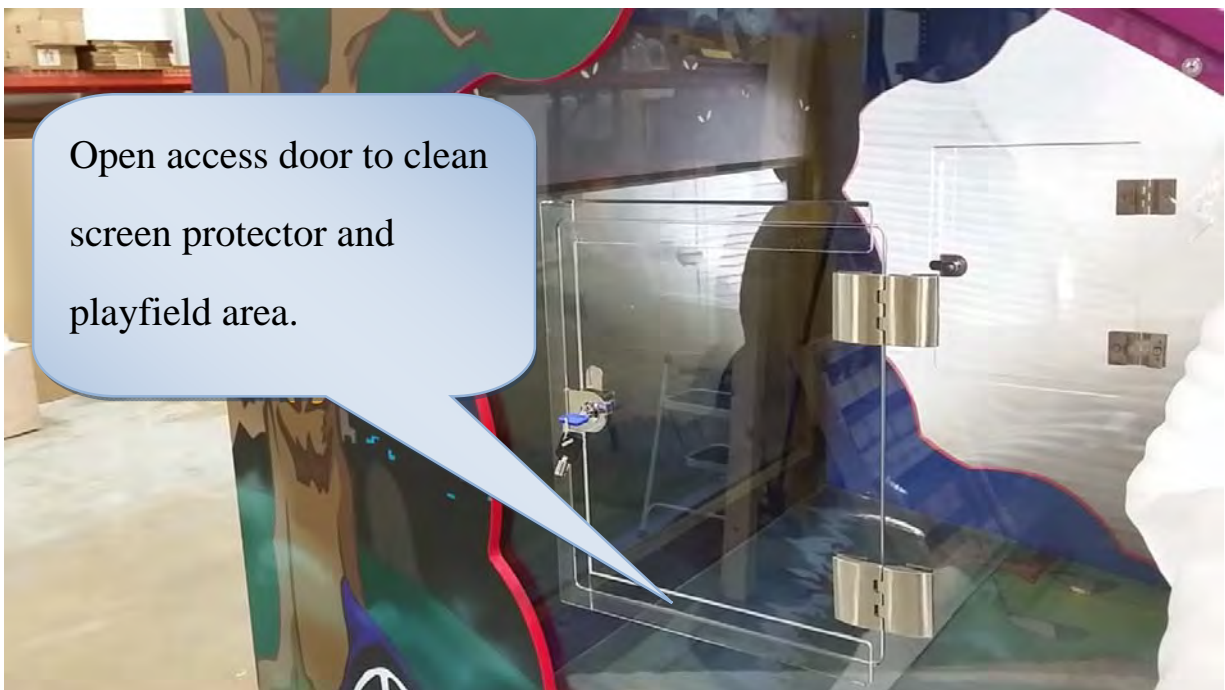
(2)Multimeter Test:Whether it is normal voltage for inserting coin or not,check the signal wire of coin selector is connected with IN1 of main board input.

## 3.Routine Maintenance

(1)Check daily for normal operation of guns, gun net and screen operation.

(2)Clean screen protector using side access windows with soft bristle brush and Novis#1 or similar product formulated for plastic. Use caution not to allow dripping into the unit or overspray to hit the IR Bezel. Use care when cleaning around the IR Bezel and

(3)After one month of operation clean screen and check ball shooter motors for wheel wear.

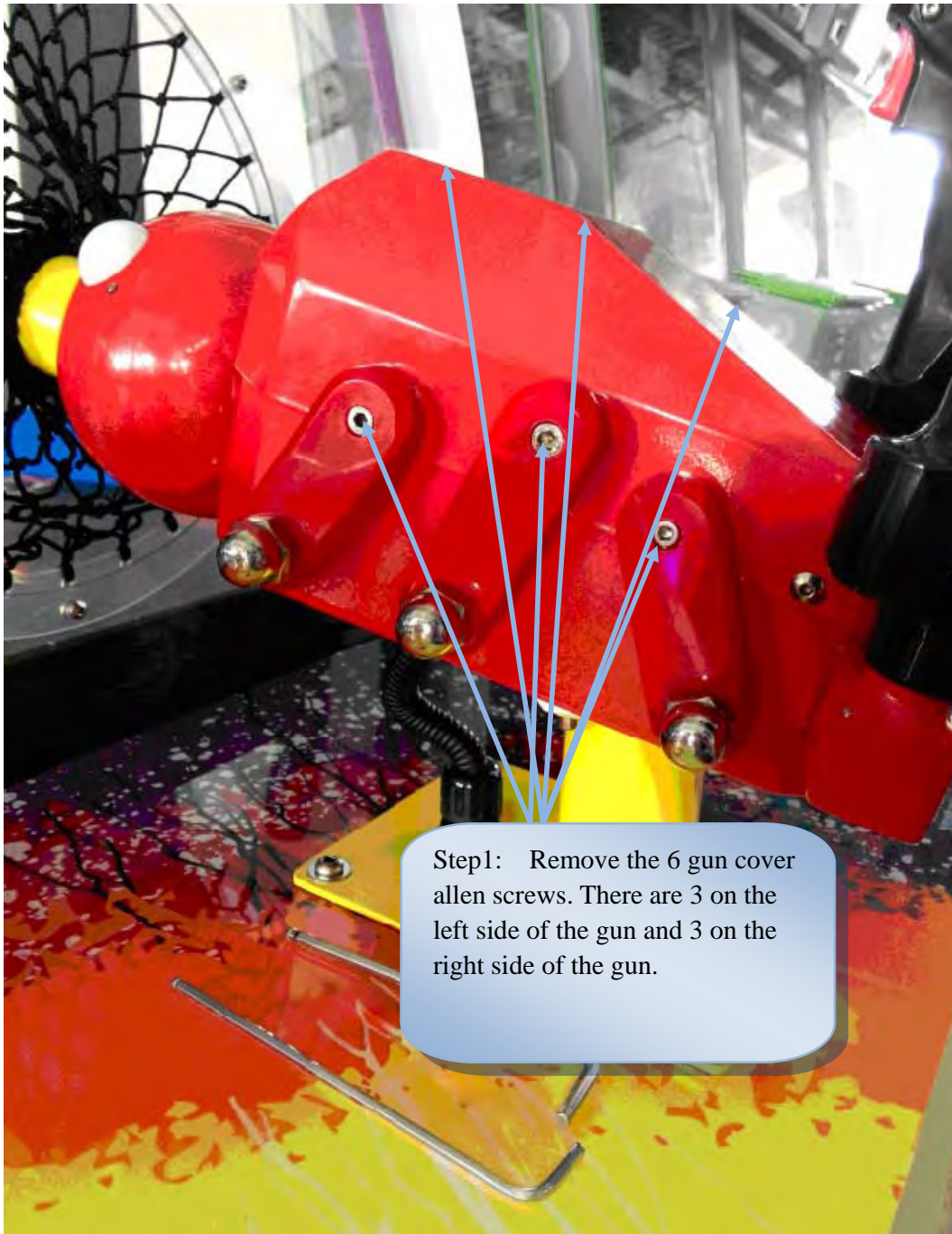


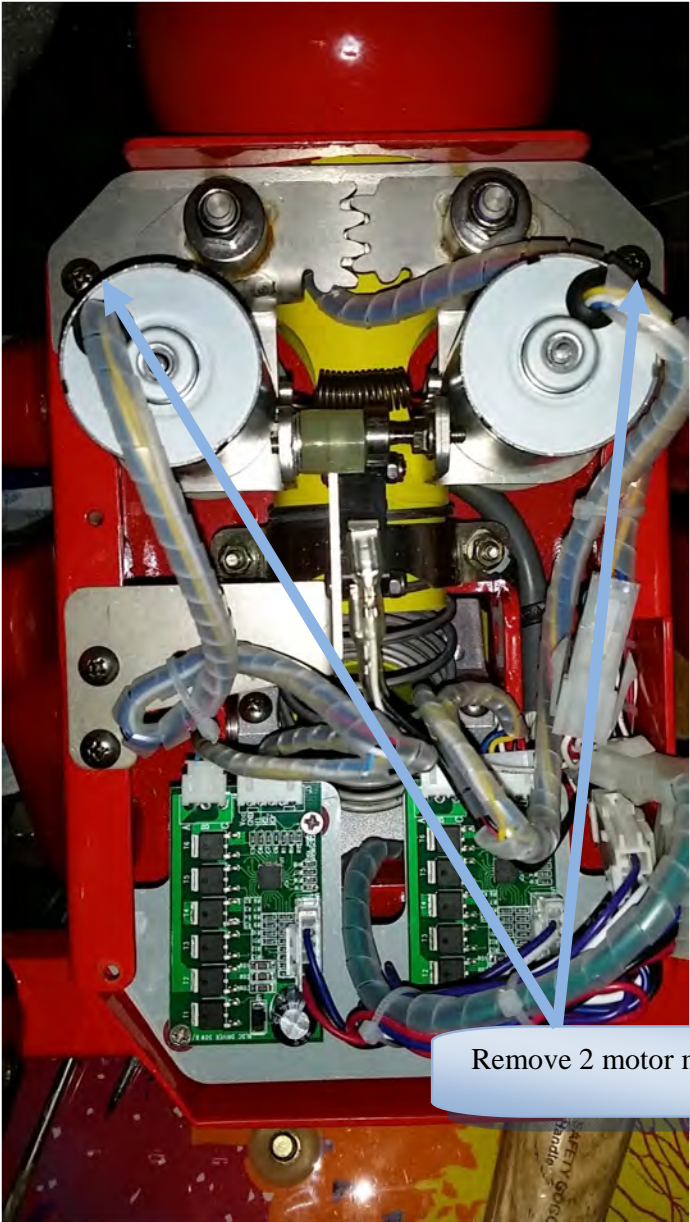
### Maintenance Note:

(1)When maintain,please remove power.

(2)Please use only OEM parts.

## Maintenance of Gun Motors





Remove 2 motor mount bracket screws



Step 3: Remove shooter wheel, then remove motor from bracket.



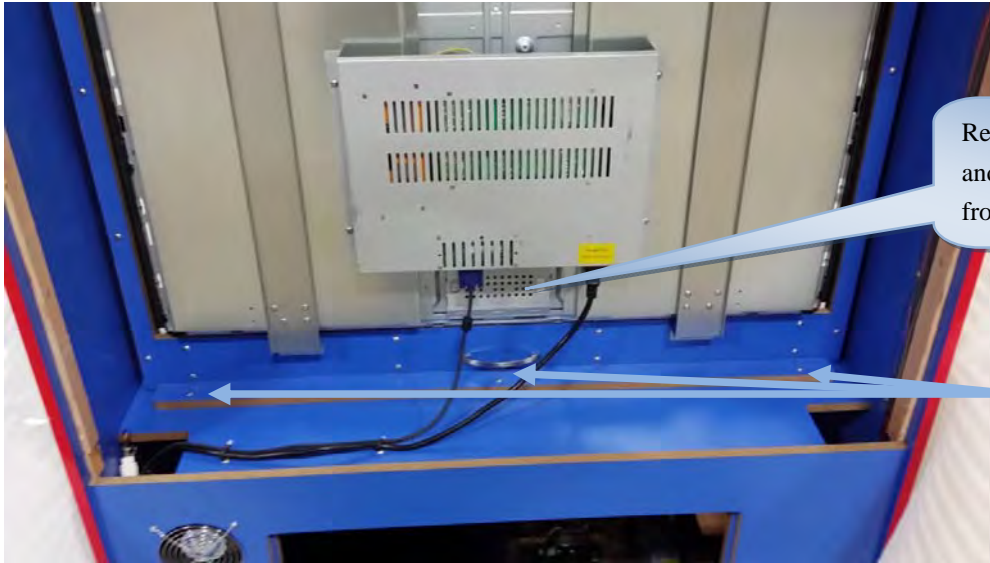
Step 4: Use the cross screwdriver to disassemble and replace new motor



Step 5: Replace rubber wheel if worn.



## Replacement of Screen Protector or IR Bezel

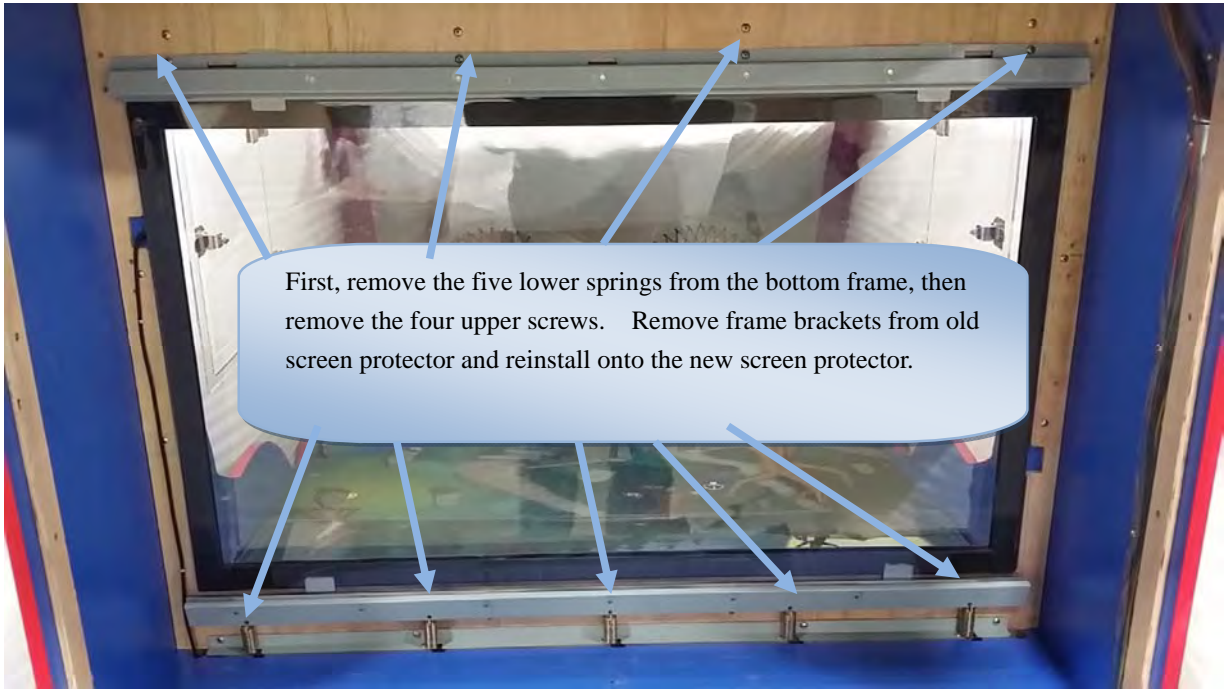


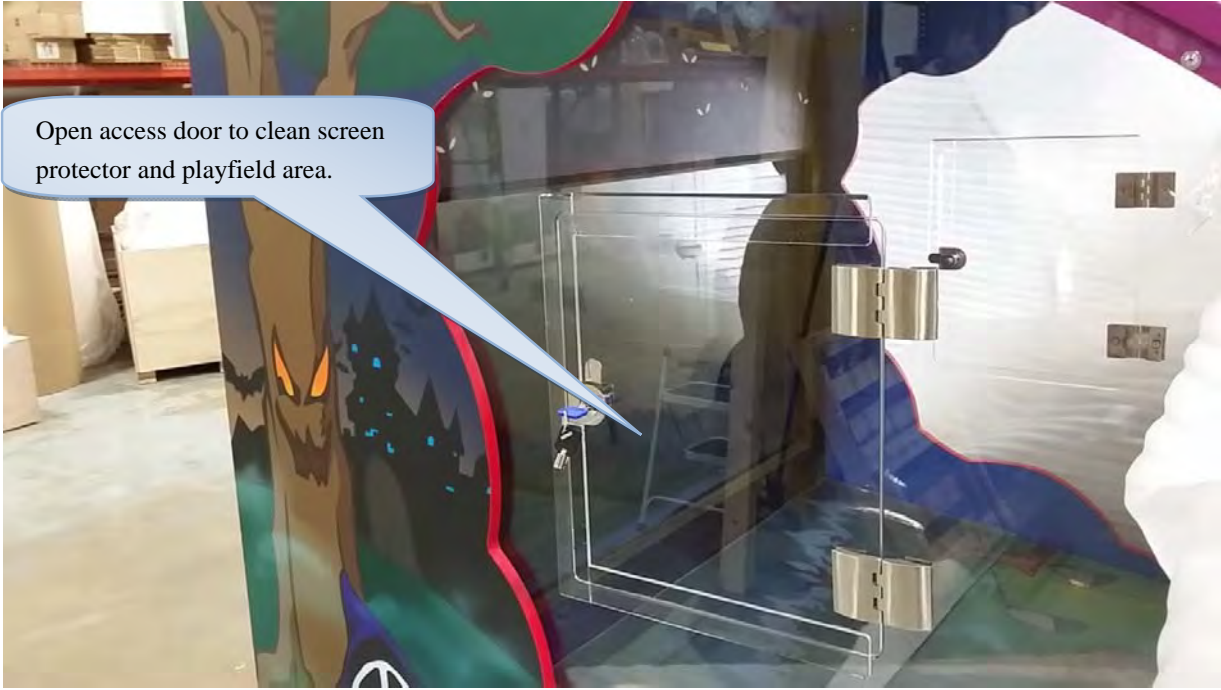
Remove both power and video cables from monitor

Remove the three Phillips screws that hold the wood brace.



Use handle to lift up monitor. Swing up on hinges to slightly above horizontal to allow both brackets to catch.

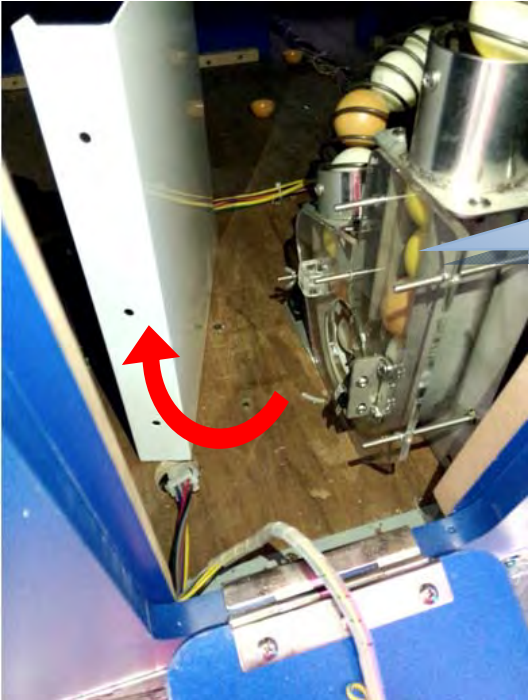




# Maintenance for Ball Feed Assembly



Open the Ticket door and you can see the delivery mechanism.

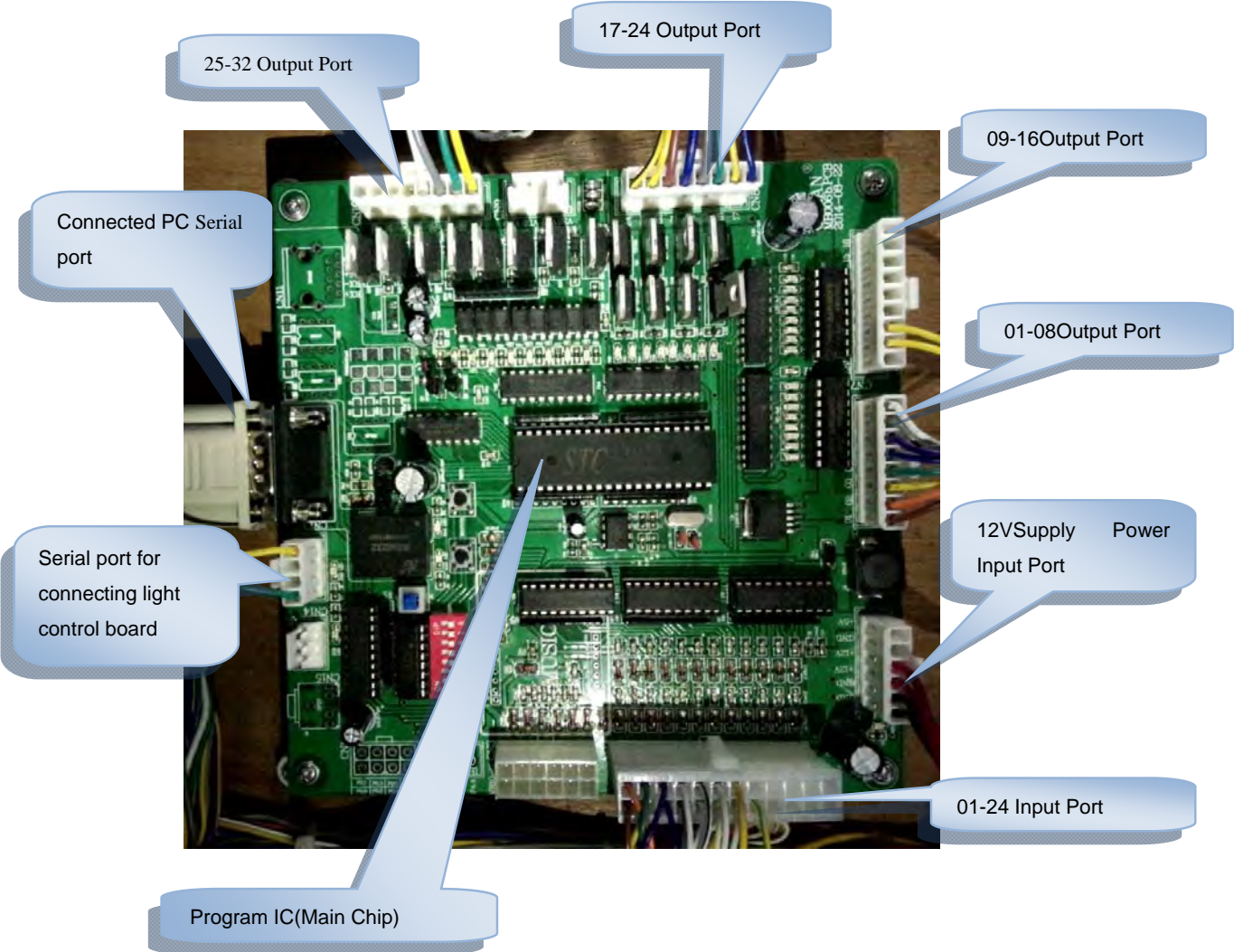


Step1: Remove the screws from ticket box and then move the ticket box left and it is convenient stretch into the ball lane to move the butterfly shape screws.

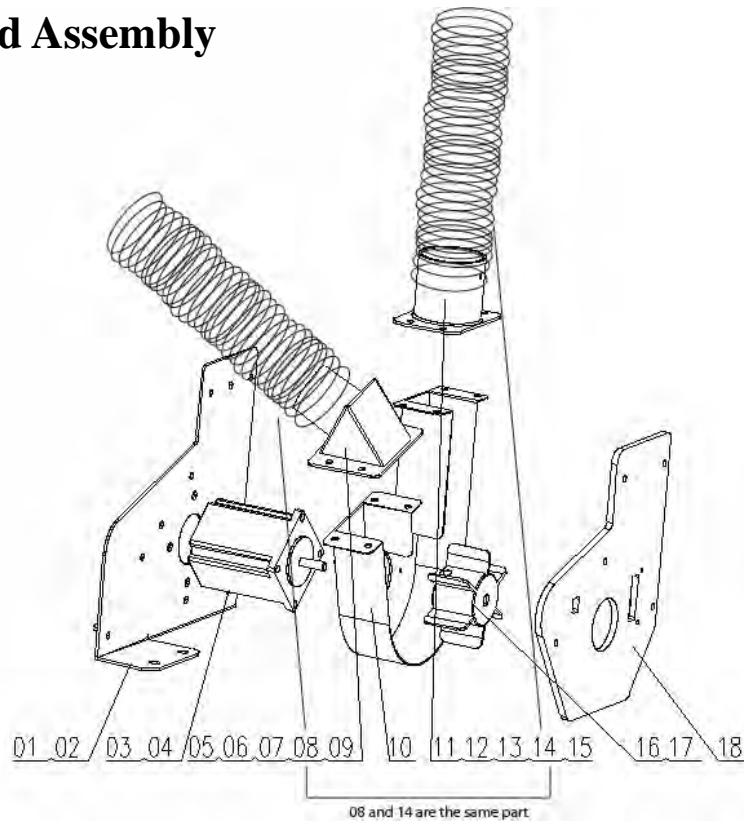


Step 2: After taking out the butterfly shape screws and move the transparent acrylic out little and then take out the jammed balls. Next, push the acrylic back, put the ticket box back to its original place and close the door.

# Main Board Detail

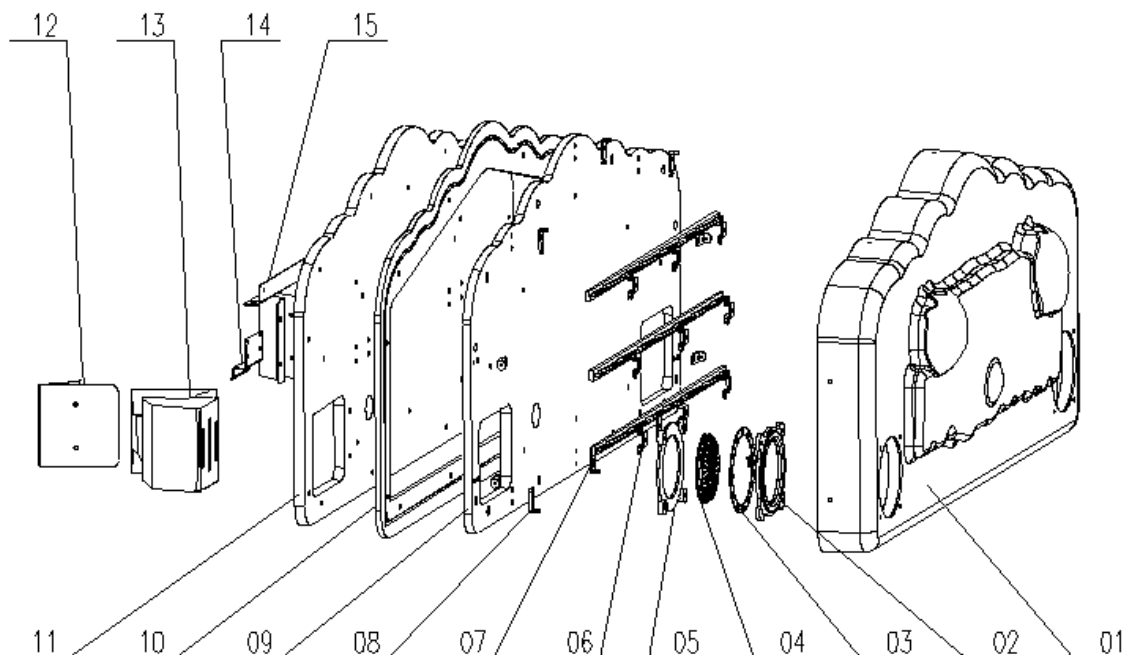


# 1. Ball Feed Assembly



No.	Drawing No.	Name	Material	Specification	Quantity	Remark
GS-1-1	SQWSJ-03-02B	Deliver Ball side board	201Stainless	δ2	2	
GS-1-2		Cross truss M4X16 bolt	Stainless	M4X16	8	Standard Parts
GS-1-3		Step Motor 57HS2228-21			2	Purchase parts
GS-1-4		Cross truss M4X12 bolt	Stainless	M4X12	8	Standard Parts
GS-1-5	SQWSJ-03-07B	Connector Socket B	201Stainless	δ1、δ2	2	
GS-1-6		Cross truss M4X12 bolt	Stainless	M4X12	8	Standard Parts
GS-1-7		M4 flange nut	MFZn-C	M4	8	Standard Parts
GS-1-8	SQWSJ-03-08B	Spring B	Stainless	φ45X2.5X300	2	customize
GS-1-9		throat bandings	Stainless	φ42--φ48	2	Standard Parts
GS-1-10	SQWSJ-03-01B	Deliver ball lane	201Stainless	δ1、δ2	2	
GS-1-11	SQWSJ-03-05B	Connector Socket A	201Stainless	δ1、δ2	2	
GS-1-12		Cross truss M4X12 bolt	Stainless	M4X12	8	Standard Parts
GS-1-13		M4 flange nut	MFZn-C	M4	8	Standard Parts
GS-1-14		Spring B	Stainless	φ45X2.5X300	2	customize
GS-1-15		Cross Head M4X6 bolt	Stainless	M4X6	4	Standard Parts
GS-1-16	SQWSJ-03-03B	Deliver ball Wheel	201Stainless	δ2	2	
GS-1-17		M4X10 Top screw	M4		4	Standard Parts
GS-1-18	SQWSJ-03-04Y	Deliver Ball side board		δ5	2	
GS-1-19		Cross Head M4X60 Bolt	Stainless	M4	12	Standard Parts
GS-1-20		M4 Butterfly Shape Screws	Stainless	M4	12	Standard Parts

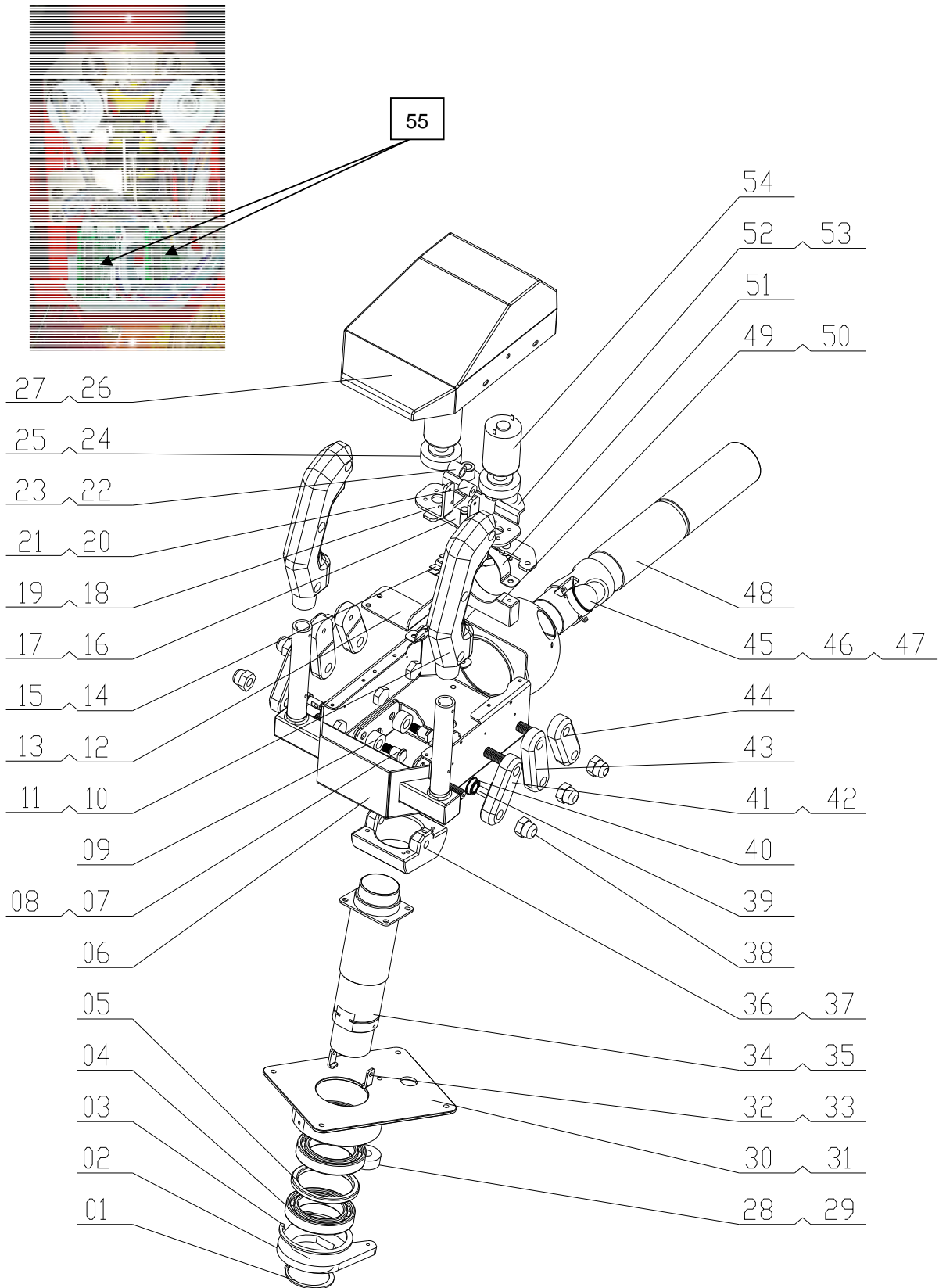
## 2.Marquee



No.	Drawing NO.	Name	Material	Specification	Quantity	Remark
GS-2-1	SQWSJ-06-01Y	Light Box	Transparent acrylic	∅ 4	1	Blister Parts
GS-2-2	SQWSJ-06-04Y	Light Box Speaker acrylic	White acrylic	∅ 8	1	
GS-2-3		Round Light Board			2	
GS-2-4		Speaker Mesh	Q235 Black	∅ 1	2	Purchased parts
GS-2-5	SQWSJ-06-06Y	Fixed plate of Speaker Light Box	Transparent acrylic	∅ 3	2	
GS-2-6	TY-JX-007Z	Fixed clip of Light Strip	Injection parts	∅ 2.5	9	
GS-2-7		LAMP STRIP	LED		3	
GS-2-8	TY-JX-002Z	Blister fixed parts	Injection parts	∅ 2.5	10	Standard part
GS-2-9	SQWSJ-06-08M	Light Box fixed Plate	Blue fiberboard	∅ 15	1	
GS-2-10	SQWSJ-06-02Y	Light Box Frame	White acrylic	∅ 8	1	
GS-2-11	SQWSJ-06-03M	Light Box Bottom Plate	Blue fiberboard	∅ 15	1	
GS-2-12	SQWSJ-06-05B	Fixed Plate of speaker	electrolytic plate	∅ 1.5	2	
GS-2-13		speaker			2	Small parts
GS-2-14	SQWSJ-06-07B	Light Box Hoop	electrolytic plate	∅ 1.5	2	
GS-2-15	SQWSJ-06-0B	Fixed Light Box by iron	electrolytic plate	∅ 1.5	1	



### 3.Gun Assembly



No.	Drawing No.	Name	Material	Specification	Qty.	Remark
GS-3-1		45Axis card	65Mn		2	
GS-3-2	SQWSJ-02-12J	Limited Fan Shape Plate	Q235	MFZn-C	2	
GS-3-3		68Hole Card	65Mn		2	Purchased part
GS-3-4		61909 Bearing			4	
GS-3-5	SQWSJ-02-22J	spacing sleeve	Q235	MFZn-C	2	
GS-3-6	SQWSJ-02-01B	Gun Assembly	Q235	Spray Red	2	Welding part
GS-3-7	SQWSJ-02-07J	Anti-collision rubber shaft	45#	MFZn-C	4	
GS-3-8		M8Nuts	Stainless		4	Standard part
GS-3-9	SQWSJ-02-08J	Anti-collision rubber A	Polyurethane		4	
GS-3-10	SQWSJ-02-31Z	Gun Handle Complete	Rejection part		4	Purchased part
GS-3-10a		Trigger				
GS-3-10b		Spring				
GS-3-10c		Micro				
GS-3-10d		Axle				
GS-3-11		Inner six angle M4X10 Bolt	Stainless		12	Standard part
GS-3-12	SQWSJ-02-28B	Switch Frame	Stainless		2	
GS-3-13		Cross flat M4X6 Bolt	Stainless		2	
GS-3-14		Mirco switch				
GS-3-15		Cross flat gasketM3X16 Bolt	Stainless		2	Standard part
GS-3-16	SQWSJ-02-20-01B	Motor Assembly	Stainless	δ 3	2	
GS-3-17		Cross flat M4X8 Bolt	Stainless		4	Standard part
GS-3-18	SQWSJ-02-20-02B	Left Motor Socket	Stainless	δ 3	2	
GS-3-19		Cross flat gasketM3X16 Bolt	Stainless		4	Standard part
GS-3-20	SQWSJ-02-20-05J	Banking Pin	Stainless	Φ 12	2	
GS-3-21		M4Nut	Stainless		2	Standard part
GS-3-22	SQWSJ-02-20-04J	Limited Rubber	Polyurethane	Φ 12	2	
GS-3-23		Inner Six Angle M4X10 Bolt	Stainless		2	Standard part
GS-3-24		Transmitting wheel assembly	Silicon 、 aluminum parts	Φ 40	4	Purchased part
GS-3-25		Cross flat gasketM4X16 Bolt	Stainless		8	Standard part
GS-3-26	SQWSJ-02-25B	Gun Cover	Q235	Spray red	2	Standard part
GS-3-27		Inner six angle cylinder head M4X15 Bolt	Stainless		12	
GS-3-28	SQWSJ-02-23J	Anti-Bumper Rubber B	Polyurethane	Φ 22	2	
GS-3-29		12Shaft	65Mn		2	Purchased part
GS-3-30	SQWSJ-02-04J	Bearing	Q23545#	Black Electroplate	2	
GS-3-31		Inner six angle cylinder headM6X35 Bolt	Stainless	Nut	8	Standard part
GS-3-32	SQWSJ-02-30B	Spring Hook	Stainless	δ 2	4	
GS-3-33		Cross flatM4X6 Bolt	Stainless		8	Standard part
GS-3-34	SQWSJ-02-03J	Revolving Shaft	seamless tube	Φ 48X6 Spray lemon yellow	2	
GS-3-35		Inner six angle cylinder head	Stainless		8	Standard part

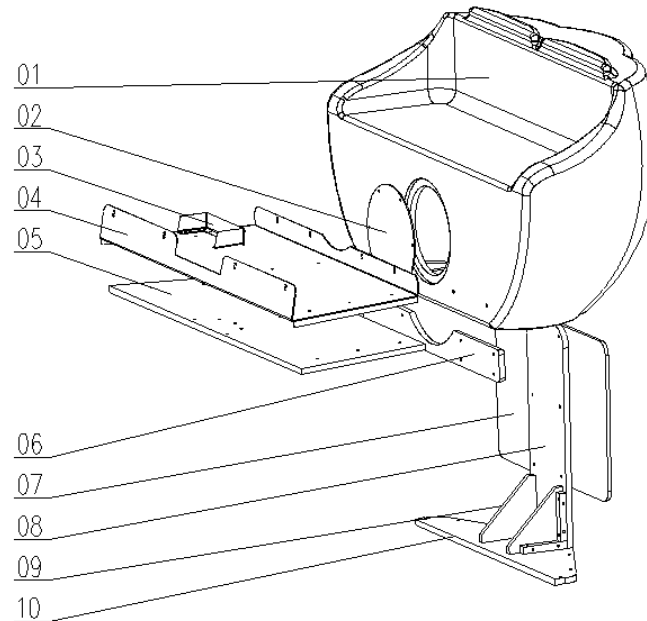
		M4X10 Bolt				
GS-3-36	SQWSJ-02-02J	transposition	aluminium alloy	surface oxidation	2	
GS-3-37		Cross flatM4X6 Bolt	Stainless		4	Standard part
GS-3-38		M10 cover	Stainless		12	Standard part
GS-3-39	SQWSJ-02-06J	Gun Shaft	45#	MFZn-C	4	
GS-3-40		F688 Bearing			4	Purchased part
GS-3-41	SQWSJ-02-33Y	Paw Acrylic C	Red Acrylic	δ 15	4	
GS-3-42		Inner six angle cylinder head M4X16 Bolt	Stainless		12	Standard part
GS-3-43	SQWSJ-02-32Y	Paw Acrylic B	Red Acrylic	δ 15	4	
GS-3-44	SQWSJ-02-31Y	Paw Acrylic A	Red Acrylic	δ 15	4	
GS-3-45		Spider Eyes Light			4	
GS-3-46	SQWSJ-02-29B	Fixed plate of eyes lights	Stainless	δ 1.5	4	
GS-3-47		Cross flatM2X20 Bolt	Stainless		8	Standard part
GS-3-48	SQWSJ-02-05J	Gun Pipe	seamless tube	Φ45X2X315Spray lemon yellow	2	
GS-3-49	SQWSJ-02-10J	Pipe	aluminium alloy	surface oxidation	2	
GS-3-50		Cross flatM4X10 Bolt	Stainless		8	Standard part
GS-3-51	SQWSJ-02-11B	tubing clip	Stainless	δ 1	4	
GS-3-52	SQWSJ-02-20-03B	Right Motor Socket	Stainless	δ 3	2	
GS-3-53		Cross flat gasketM3X6 Bolt	Stainless		4	
GS-3-54		Shooter motor			4	
GS-3-55		Shooter motor driver board			4	

# Ball Agitator Motor



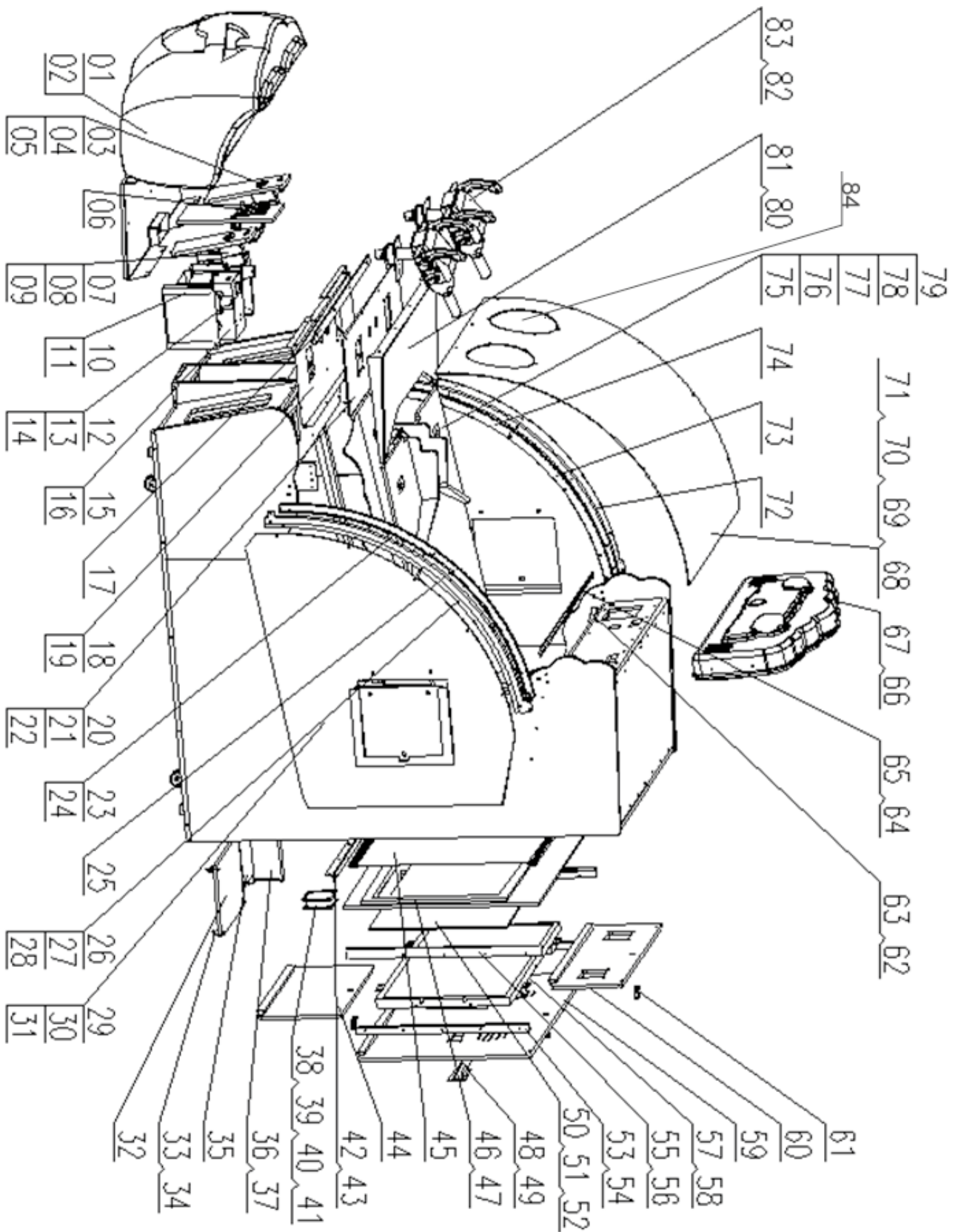
<p><b>GS-3-100</b></p>	<p>ball agitator motors 拨球电机</p>	<p>PG38-3540-12V-80RPM</p>		
<p>GS-3-101</p>	<p>ball agitator motors spring 拨球电机弹簧</p>			
<p><b>GS-3-102</b></p>	<p>ball agitator motor impellers 拨球电机转轮</p>			
<p>GS-5-77</p>	<p>Guiding ball net 运转球道</p>			
	<p>agitator motors control board 拨球电机控制板</p>	<p>MT-DIR.PCB</p>		
<p>GS-1-00</p>	<p>balls 球</p>			

## 4.Pumpkin Chair



No.	Drawing No.	Name	Material	Specification	Qty	Remark
GS-4-1	SQWSJ-07-01	Fiberglass Chair	Fiber glass	δ 5	1	
GS-4-2	SQWSJ-07-10Y	Pumpkin Chair Light board	White acrylic	δ 3	1	
GS-4-3	SQWSJ-07-03B	Pedal surrounding plate	Small trefoil antiskid aluminum	δ 2	1	
GS-4-4	SQWSJ-07-02B	Pedal Plate	Small trefoil antiskid aluminum	δ 2	1	
GS-4-5	SQWSJ-07-04M	Pedal wood plate	plywood	δ 15	1	
GS-4-6	SQWSJ-07-05M	embedded part	plywood	δ 15	1	
GS-4-7	SQWSJ-07-09M	Light fixed plate	plywood	δ 9	1	
GS-4-8	SQWSJ-07-07M	Light bracket plate	plywood	δ 15	1	
GS-4-9	SQWSJ-07-08M	Triangular stiffened plate	plywood	δ 15	2	
GS-4-10	SQWSJ-07-06M	Light bracket bottom plate	plywood	δ 15	1	
GS-4-11		Cone nut		M4	43	
GS-4-12		Cross truss M4X20 bolt	stainless	M4	33	
GS-4-13		Cross trussM4X16 bolt	stainless	M4	13	
GS-4-14		Cross trussM4X16 tapping	stainless	M4	6	
GS-4-15	SQWSJ-07-11Y	Left eyes acrylic of pumpkin chair	White acrylic	δ 3	1	
GS-4-16	SQWSJ-07-12Y	Right eyes acrylic of pumpkin chair	White acrylic	δ 3	1	
GS-4-17	SQWSJ-07-13Y	mouth acrylic of pumpkin chair	White acrylic	δ 3	1	

# 5.General Assembly Drawing



No.	Drawing No.	Name	Material	Specification	Qty	Remark
GS-5-1	SQWSJ-07-00	Pumpkin Chair Assembly	Fiberglass	δ 5	1	
GS-5-2		Cross flat screws	Stainless	M4X16	4	Standard part
GS-5-3		Ticket mouth decorative covers	201Stainless	δ 1	2	Purchased part
GS-5-4		Square neck screw	Stainless	M4X16	4	Standard part
GS-5-5		M4 flange nut	MFZn-C	M4	4	Standard part
GS-5-6		Coin collector			2	set
GS-5-7		Ticket dispenser			2	Purchased part
GS-5-8		fixed plate of ticket dispenser			2	Purchased part
GS-5-9		Cross flat screws	Stainless	M4X12	8	Standard part
GS-5-10		Ticket box	Q235	δ 1.0Spray white	2	
GS-5-11		Cross flat screws	Stainless	M4X12	6	Standard part
GS-5-12	SQWSJ-03-00	Deliver ball mechanism Assembly	201Stainless	δ 2	2	
GS-5-13		Cross flat screws	Stainless	M4X16	8	Standard part
GS-5-14		throat bandings	Stainless	φ 42-φ48	2	Purchased part
GS-5-15	SQWSJ-04-00	Coin box assembly	Q235	δ 1.0	1	
GS-5-16		Cross flat screws	Stainless	M4X16	4	Standard part
GS-5-17	SQWSJ-01-28Y	Control lighter PCB. acrylic	White acrylic	δ 10	1	
GS-5-18	SQWSJ-01-19B	Control panel	Q235	δ 1.5Spray lemon yellow	1	
GS-5-19		Cross flat screws	Stainless	M4X16	4	Standard part
GS-5-20	SQWSJ-01-27Y	Acrylic of control panel	transparent acrylic	δ 5	1	
GS-5-21		Inner six angle screw	Stainless	M4X12	4	Standard part
GS-5-22		Inner six angle screw	Stainless	M4X16	3	Standard part
GS-5-23	SQWSJ-01-69Y	Right Fixed bracket acrylic A	White acrylic	δ 15	1	
GS-5-24		Inner six angle screw	Stainless	M4X20 flat gasket	5	
GS-5-25	SQWSJ-01-70Y	Right Fixed bracket acrylic B	White acrylic	δ 15	1	
GS-5-26	SQWSJ-01-40B	Side Fixed bracket acrylic	25 square pipe	δ 2 spray12023	1	Small parts
GS-5-27		Inner six angle screw	Stainless	M4X16	3	Standard part
GS-5-28		Square neck screw	Stainless	M6X35	2	Standard part
GS-5-29	SQWSJ-01-18Y	side acrylic	transparent acrylic	δ 5	2	
GS-5-30		Inner six angle screw	Stainless	M4X25flat	10	Standard part
GS-5-31		M4 cover hat	Stainless	M4	10	Standard part
GS-5-32	SQWSJ-05-01M	Computer fixed plate	Blue fiberboard	δ 15	1	
GS-5-33		Shockproof stud	M6+rubber	M6	4	
GS-5-34		M6 Flange nut	MFZn-C	M6	4	
GS-5-35		Controlled main board			1	
GS-5-36		power supply transformer			1	
GS-5-37		Cross flat screws	Stainless	M4X16	4	Standard part
GS-5-38		exhaust fan			1	
GS-5-39		Exhaust fan protective net			2	

GS-5-40		Cross head screw	Stainless	M4X60	4	
GS-5-41		M4 flange nut	MFZn-C	M4	4	Standard part
GS-5-42	SQWSJ-01-58B	fixed strip of soft glass spring	electrolytic plate	δ 1.5	1	
GS-5-43		Cross flat screws	Stainless	M4X16	6	Standard part
GS-5-44	SQWSJ-01-22M	Back down door	Blue Fiberboard	δ 15	1	
GS-5-45	SQWSJ-01-35Y	B Assembly of monitor glass	PVC soft glass	δ 2	1	Small part
GS-5-46	SQWSJ-01-12M	fixed frame of monitor glass	Blue Fiberboard	δ 15	1	
GS-5-47		M4 cone nut	cone nut	M4	11	
GS-5-48		Handle	rejection part	δ 2	2	
GS-5-49		Cross self tapping screws	Stainless	M4X16	8	Standard part
GS-5-50	SQWSJ-01-34Y	Monitor glass A		δ 5	1	
GS-5-51	SQWSJ-01-62B	Glass fixed plate	electrolytic plate	δ 1.5	1	
GS-5-52		Cross self tapping screws	Stainless	M4X12	8	Standard part
GS-5-53	SQWSJ-01-23M	Retaining strip of middle door	Blue Fiberboard	δ 15	2	
GS-5-54		Cross flat screws	Stainless	M4X25	10	Standard part
GS-5-55	SQWSJ-01-11M	Back retaining strip of monitor frame	Blue Fiberboard	δ 15	2	
GS-5-56		Cross flat screws	Stainless	M4X25	10	
GS-5-57		Monitor		42 inch	1	
GS-5-58		Cross flat screws	Stainless	M4X12	8	Standard part
GS-5-59	SQWSJ-01-20M	Back Middle Door	Blue Fiberboard	δ 15	1	
GS-5-60	SQWSJ-01-21M	Back upper Door	Blue Fiberboard	δ 15	1	
GS-5-61		Door Key		3172	8	
GS-5-62	SQWSJ-01-33B	T-molding of side acrylic	Stainless mirror	δ 1.0	2	
GS-5-63		Cross flat screws	Stainless	M4X12	6	Standard part
GS-5-64	SQWSJ-01-59B	T-molding of PC cover	Stainless mirror of single side	δ 1.0	1	
GS-5-65		Cross flat screws	Stainless	M4X12	5	Standard part
GS-5-66	SQWSJ-06-00	Light Box assembly	Acrylic ,fiberbo	δ 15	1	
GS-5-67		Cross flat screws	Stainless	M4X16	3	Standard part
GS-5-68	SQWSJ-01-36Y	Outside cover	PC	δ 3	1	
GS-5-69	SQWSJ-01-63Y	Fixed ring of PC hole cover	PC	δ 2	2	
GS-5-70		Inner six angle screw	Stainless	M4X10	22	Standard part
GS-5-71		M4 flange nut	MFZn-C	M4	12	Standard part
GS-5-72	SQWSJ-01-30B	Left fixed bracket of side acrylic	25 square pipe	δ 2 Spray12023	1	
GS-5-73	SQWSJ-01-68Y	Left fixed bracket of side acrylic B	White acrylic	δ 15	1	
GS-5-74	SQWSJ-01-67Y	Left fixed bracket of side acrylic A	White acrylic	δ 15	1	
GS-5-75	SQWSJ-01-06M	slider plate	Blue Fiberboard	δ 15	1	
GS-5-76	SQWSJ-01-39B	Bifurcation of the fairway	201Stainless	δ 2	1	
GS-5-77	SQWSJ-01-71B	Guiding ball net	201Stainless	δ 2	1	
GS-5-78	SQWSJ-01-74Y	Shell proof ball PVC	201Stainless	δ 2	1	
GS-5-79		Cross flat screws	Stainless	M4X16	10	Standard part
GS-5-80	SQWSJ-01-60B	Stopper plate	Q235	δ 1 spray sky	1	
GS-5-81		Cross flat screws	Stainless	M4X12	8	Standard part
GS-5-82	SQWSJ-02-00	Gun assembly	Q235	δ 2	2	
GS-5-83		Inner six angle screw	Stainless	M6X35 washer	8	Standard part
GS-5-84		Gun net	Net		2	



## 6. Decals / LED Strips



GS-6-1		Right Side Front Decal		1	
GS-6-2		Right Side Back Decal		1	
GS-6-3		Left Side Front Decals		1	
GS-6-4		Left Side Back Decal		1	
GS-6-5		Control Panel Decal		1	
GS-6-6		Front Playfield Decal		1	
GS-6-7		Rear Playfield Decal		1	
GS-6-8		Monitor Bezel Decal		1	
GS-6-9		Marquee edge LED (RGB connector both ends, 9")		3	
GS-6-10		Marquee backlight (rigid WHT, 21")		3	
GS-6-11		Playfield Side Acrylic LED (72 RGB connector both ends, 57")		2	
GS-6-12		Control Panel LED (RGB 52 connector one end ,42")		1	
GS-6-13		Pumpkin LED (RGB connector one end, 19")		3	

## 7.Computer and Control

